

SUMMARY

Client:

Rizzani York JV

Field:

Swan River, Perth

Project:

Marine Construction of the central arches.

Spread:

Local cargo barges, harbour tugs and specialist jacking subcontractors.

Personnel:

Project Engineers
Construction manager
Winch operators
Marine personnel

Services:

Installation Engineering
Project Engineering
Construction management

Project Outcomes:

Repair completed ahead of schedule.
Zero Injuries.
Zero Incidents.

PROJECT PROFILE

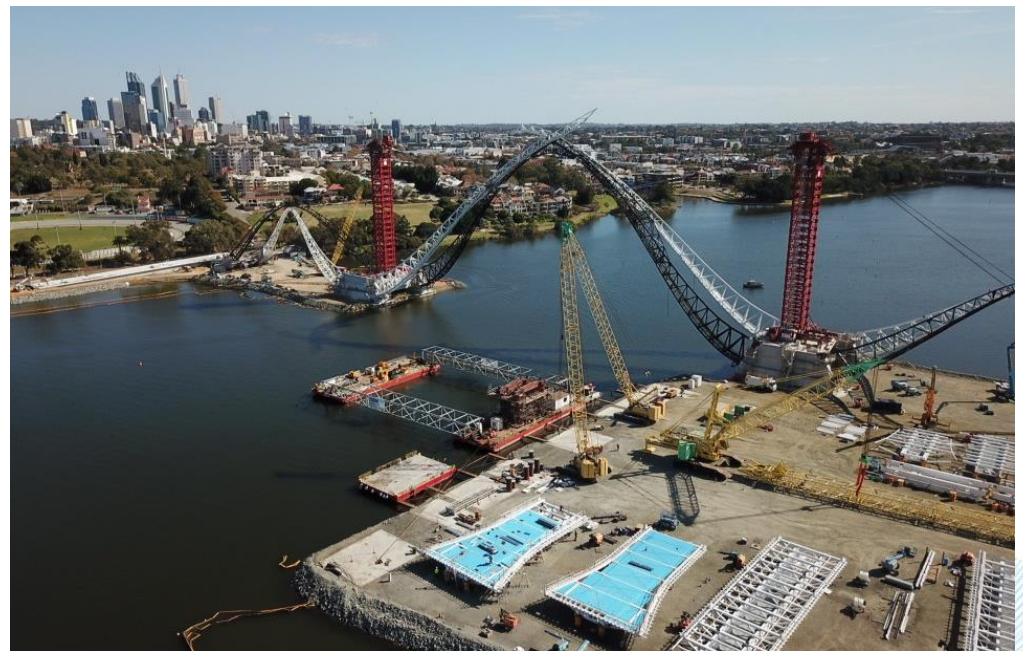
Infinity Offshore was contracted to RYJV to provide specialist marine construction services for the installation of the Matagarup bridge that links the 60,000 seat Optus Stadium to the Perth CBD. The engineering scope of work involved constructability assessment, and method statement development to manoeuvre the large central truss structures from the quay side loadout location to their connection points at the concrete abutments.

Part of the concept included design and procurement of large steel trusses to separate the cargo barges used to support the trusses during this process.

In addition, Infinity Offshore was mobilized to provide specialist site personnel, including Marine Construction manager, winch operators and other marine personnel to support in the project execution phase.

The main services provided to the client were:

- Interface management between client subcontractors including ALE and TAMS.
- Development of construction method statements for all marine operations.
- Supply of specialist construction personnel.



Suite 4, Subi Strand, 21 Roydhouse Street Subiaco, Western Australia 6008



info@infinityoffshore.com.au



+61 8 6142 8356